

WORK PORTFOLIO



TIMOTHYGLASS

(<http://timothy-glass.wix.com/timothy-glass>)

@

DESIGN BUBE

TIM GLASS @ DESIGN BUBE

**Green Terrace Resort “Style” Living
Serviced Apartment and Hotel Development
Yangon, Myanmar.**

2014-Present

The Brief

Situated in Yangon, Myanmar, Mingaladon Green Terrace is a “Resort Style” mixed-use complex comprising 4 nos nine storey Serviced Apartment Buildings and 1nos nine storey Hotel block to be developed in 3 phases.

Phase I: “Green Terrace” Luxury Serviced Apartment 1nos

Phase II: “Reign Tree” Luxury Serviced Apartment 2nos with “Reign Tree” 5 Star Hotel 1 nos

Phase III: “Green Terrace” Luxury Serviced Apartment 1nos

Green Terrace has been designed in a resort style with the relaxed yet dynamic buildings taking advantage of the adjacent golf course to provide the apartments with either golf or garden views. The complex incorporates Resort Style facilities such as infinity edge swimming pool, spa, fully equipped gym and health club, and children’s play area.

Designed with environmental and energy efficient attributes at the forefront, the development will incorporate wind generators above all pipe shafts/ stacks, integrated light wells to illuminate the inner public lift core lobbies and radiant water cooled floors. Seamless indoor/outdoor living is encouraged through the use of large open decks at all levels which provide desirable outdoor living areas and are extremely effective in shading the building from the harsh sun. At the heart of the design along with the extensive outdoor living areas is the incorporation of self watering and assisted watered green walls. These lush walls are maintained through water saving mist irrigation which is fed from the rain water harvested supply and provide a clean, oxygen rich air. Double glazed aluminium framed windows, steel framed insulated drywalls and cavity block walls are used to ensure the interior building environment is kept stable.

Workscope

Theme and Motif Creation, Architectural Design, Interior Design, Documentation, Landscape concept, Integration, Site Supervision and Review for the 5 buildings of the development.

Theme and Motif Creation, Architectural Design, Interior Design, Documentation, Landscape concept, Integration, Site Supervision and Review for “mock-up” serviced apartment to be used for marketing purposes.

Design Elements

Complete Architectural and interior design for all 5 buildings of the phased development.

Phase I: “Green Terrace” Luxury Serviced Apartment 1nos

56 Units (1, 2 and 3 Bedrooms)

7,500 sqm built area

Phase II: “Reign Tree” Luxury Serviced Apartment x 2nos

64 Units (1 and 2 Bedrooms)

16,000 sqm built area

“Reign Tree” 5 Star Hotel x 1 nos

126 Units (1 and 2 Bedrooms)

16,000 sqm built area

Phase III: “Green Terrace” Luxury Serviced Apartment 1nos

56 Units (1, 2 and 3 Bedrooms)

7,500 sqm built area

Client: Amata Group



Banana Island Resort and Spa by Anantara (US\$300m.)
Banana Island, Doha, Qatar.
(www.doha.anantara.com)

2011 – 2015.

The Brief

To create a world class 5+ star resort bringing an exclusive island feel to the ever expanding urban environment of Doha, Qatar. 20 minutes by boat from the heart of Qatar's vibrant capital, Doha, the Banana Island Resort and Spa by Anantara is located on a breathtaking 13 hectare island that feels a world away from the hustle and bustle of the city.

With architecture inspired by Tropical resorts teamed with local vernacular, the myriad of facilities are housed along the entire length of the island.

Fusing modern Arabic design with luxurious amenities the 4 styles of accommodation totaling 141 Rooms, Suites, Pool Villas and Over Water Villas provide an almost endless choice for discerning guests, whilst the inclusion of 7 dedicated restaurants and dining venues aim to attract visitors to the island for the culinary experience alone.

Designed to compliment Anantara's lifestyle programmes, the Balance Wellness Centre houses dedicated facilities to enhance Anantara's holistic approach to assessing a Guest's lifestyle, physical, mental and emotional state to devise a programme that is personally prescribed to the individual guests needs. To aid in the rejuvenation and experience of the guests the Anantara Spa located adjacent to the Over Water Villas is a dedicated spa village incorporating single and double treatment rooms, Male and Female Hammams, Jacuzzi's and Relaxation Lounges.

Recreation and resort facilities include a 2 lane surf pool, 8 lane bowling alley, cinema, 9 hole putting golf course, Reef Conservation and Dive Centre, 800m long beach, 100m long lagoon pool and kids aqua park with 3 water slides.

Opened Jan 01, 2015.

Workscope and Building Zones / Components

Guest Arrival / Departure Pontoon and Pavilion

Day Guest Arrival Pier and Pier Shelter

Guest Arrival / Reception Welcome Centre

Helipad and Helipad Arrival Centre

Balance Wellness Centre, Spa and Restaurant (Azraq and Zest)

Business Centre and Restaurant (Riva)

Lookout Restaurant (Al Nahham)

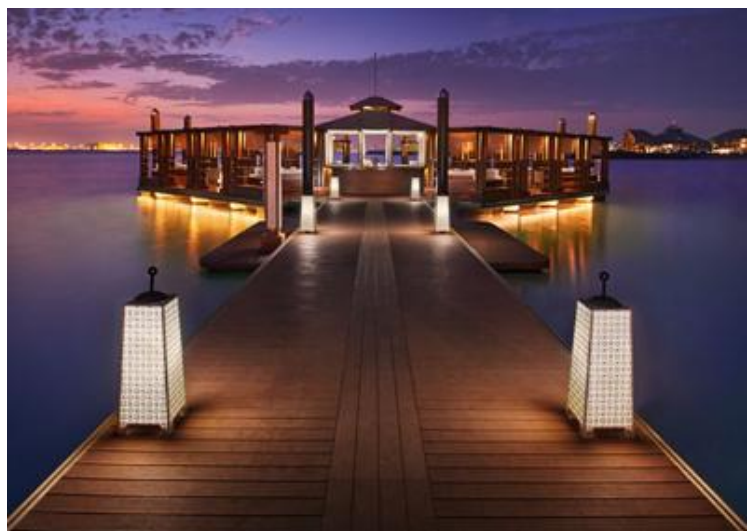
Reef Conservation and Dive Centre

Kids Club and Ted's American Diner

Kids Aqua Play

Recreation Welcome centre, Surf Pool and Observation Bar

Family Entertainment Bowling and Theatre



Beach Club Restaurant (Q Lounge & Restaurant)
 Floating Lounge
 Lagoon Pool Bar and Beach Bar
 Anantara Destination Spa
 Over Water Villa Welcome Centre
 2 and 3 Bedroom Over Water Villas
 2 and 3 Bedroom Sea View Pool Villas
 Sea View and Deluxe Sea View Suites
 Anantara and Premier Sea View Suites
 Marina
 Tennis Colonnade
 Back of House

Design Elements

Complete Master Planning of the entire project
 Architectural Design of the entire project
 Interior Design of all Accommodation, Guest Arrival,
 Wellness Centre, Spa and BoH buildings.
 Furniture design through-out all rooms, suites and public spaces as part of Interior Design.
 Landscape concept through-out.

Services Rendered

Master Planning, Architectural Design, Interior Design, Landscape Concept, Integration, Site Observation, Construction.

*Client: Private Engineering Office (PEO),
 Qatari Govt.*





The Brief

Incorporated within the new Dukhan Beach Palace built for a Sheik in Qatar, the Dukhan Beach Palace Spa is 250 sqm of spa luxury. Designed to compliment the opulence of the Palace's extensive use of White Marble, the design of the spa was undertaken to create a more relaxed atmosphere, one of warmth and peacefulness where the guests felt an immediate sense of calm. Warm tones of marble and stone were used throughout, with intricately carved screens and ceilings of sustainably sourced Burmese teak creating dramatic highlights.

The design was developed with a strong sense of local identity, with the palm motif being created as a direct consequence of the location of the surrounding palm plantation. 8 point and 12 point stars were incorporated into the tiling patterns to create features, whilst back-lit gold resin domes were incorporated into the ceiling.

As part of the design and build team, the design of the Spa needed to be intricate and delicate, yet easily produced. Taking advantage of the skills and trades available, the beautifully carved timber screens, ceilings, doors and furniture elements were built in Thailand where the local carpenters are passionate and highly skilled craftsman, whilst all of the marble work was done using Qatari based trades as this is a highly developed skill base of the area.

The late addition of the Barber Room was incorporated with a minimum of change and being Design and Build the design coordination and observation on site was extensive with the revised solution being found almost immediately.

Workscope

Theme and Motif Creation, Architectural Design,
Interior Design, Fit-out and Construction.

Design Elements

Complete Planning of the entire spa incorporating entry water feature, 2 treatments rooms, steam room, sauna, hydrotherapy pool, "experience" shower, barber room and relaxation zone.

Coordination and integration with appointed consultants and contractors, as well as clients Project Manager.

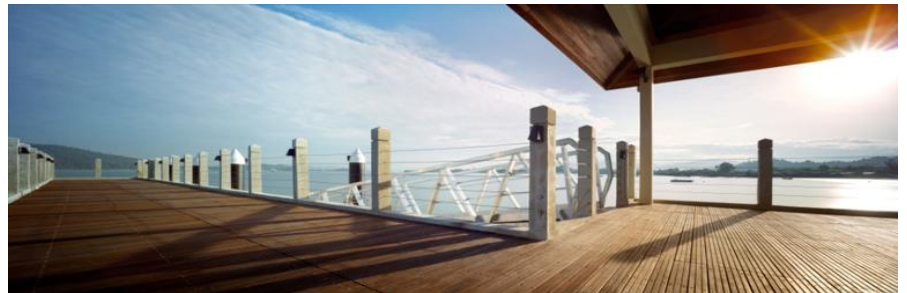
Architectural design of the dedicated spa space.

Complete Interior and Furniture design within all spa zones.

Client: Name withheld for Privacy.

Marina and Water Sports / Dive Centre at Shangri-la's Tanjung Aru Resort and Spa
(US\$1.5m excluding Marina Pier)
Kota Kinabalu, Malaysia (www.shangri-la.com/kotakinabalu/tanjungaruresort/)

2011 - 2012



The Brief

As part of the continued upgrade and expansion of the facilities at Shangri-La's Tanjung Aru Resort and Spa, the existing dilapidated Marina Jetty and Dive Centre were completely removed and brand new state of the art facilities were added. A new pontoon and arrival pavilion pier allowed greater access to the water, whilst the Hotels Water Sports Activities were combined with a new Dive Centre. Incorporating a Dive Shop, Management Facilities, Harbour Masters Office, Classroom, Change Rooms, Dive Equipment Support Facilities and Compressor room the new building aimed at providing first class facilities for the dynamic dive community, whilst allowing guests of the Hotel to freely choose from the vast array of water sports facilities on offer. Separate storage facilities were provided for smaller water sports craft (paddleboards, wake boards, sail boards), whilst a larger workshop was added with 3 dedicated work-bays to allow the Hotels fleet of water craft to be serviced on site.

Design Elements

Site Planning and Development.
Architectural Design
Interior Design
Landscape Design

Services Rendered

Planning, Architectural Design, Interior Design, Landscape Design, Integration, Construction Observation.

Client: Shangri-La's Tanjung Aru Resort Sdn Bhd

TIM GLASS @ DESIGN BUBE

Shangri-La's Rasa Sentosa Resort and Spa (US\$65m.)
Siloso Beach, Sentosa, Singapore (www.shangri-la.com/singapore/rasasentosaresort/)

2009 - 2011

The Brief

Situated on Siloso beach, overlooking the South China Sea, Shangri-La's Rasa Sentosa Resort received a complete make-over with virtually every facility experiencing a change. Designed to further enhance the resorts established reputation as a "Family Friendly Destination", the rooms designed to allow greater flexibility with sofa beds or 'pull-down Murphy Beds' available in most rooms. Dining options were increased to incorporate the 'family style' focused restaurant Casserole, and the inclusion of a fun ice cream bar adjacent to the swimming pool doubles the fun. With the total redevelopment and redesign of the arrival facilities and lounges, as well as the complete redesign of all the rooms, the guest facilities are unsurpassed in the region. Added to this the redevelopment of the swimming pool, enhanced facilities at the kids splash zone and kids club, as well as the updated beach experience, Shangri-la's Rasa Sentosa Resort is virtually a brand new hotel.



Workscope and Building Zones / Components to be Redesigned

Entrance Experience

Lobby

Reception

Lobby Lounge

"Cool Lounge" Relaxation / Information area

Retail Zone

Pavilion Meeting Room/ Ballroom

Dine on 3 Restaurants and Bar (Casserole, Silver Shell Café, Bubble bar)

Kids Zone

Spa

Ballroom and prefunction areas

Meeting rooms

Gym/ Health Club

Meeting Rooms

Sea and Hill Facing Rooms

Suites

Family Suites and Rooms

Barnacles Restaurant

Swimming Pool

Kids Splash Zone and Slides

Pool Bar

Ice Cream Bar



Design Elements

Complete Planning of the entire project

Architectural design of the redeveloped space

Complete Interior design of all zones

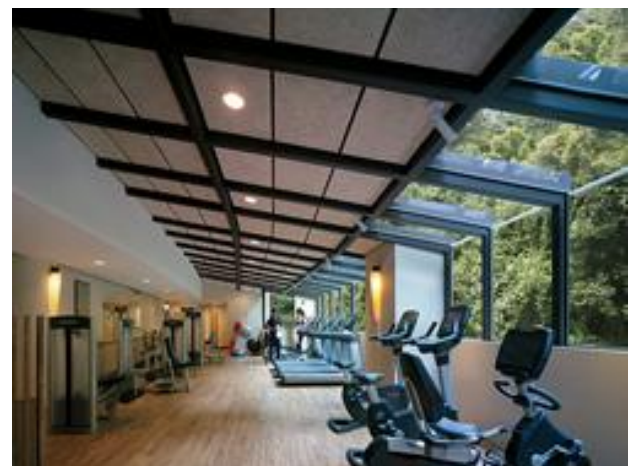
Furniture design through-out all rooms and suites

Introduction of Family Suites through connecting rooms and extending existing rooms
 Complete architectural, interior and furniture design for Dine on 3 Restaurants, Lobby, Lobby Lounge and Reception
 Landscape concept through-out

Services Rendered

Theme and Motif Creation, Planning,
 Architectural Design, Interior Design,
 Landscape Design, Integration.

*Client: Shangri-La's Rasa Sentosa
 Resort and Spa*





Swimming Pool, Slides, Kids Zone and Facilities (US\$3.8m)
Shangri-La's Tanjung Aru Resort and Spa, Kota Kinabalu, Malaysia
[\(www.shangri-la.com/kotakinabalu/tanjungaruresort/\)](http://www.shangri-la.com/kotakinabalu/tanjungaruresort/)

2010 - 2011

The Brief

Striving to provide their guests with the most up to date facilities and experiences available, it was decided that the existing swimming pools were to be completely redeveloped and new facilities added. Taking advantage of the decision to redevelop Coco Joes Bar and Restaurant, the redevelopment of the swimming pools was added to comprise a totally new Recreation and Dining Zone. The swimming pool zoning was broken down to incorporate an area for relaxed swimming and activities which incorporated an infinity edge pool area where the pool appears to extend into the South China Sea and bubble seats and loungers whereby guests can relax with a water and air jet massage. A gently sloping "Beach" edge was incorporated to allow guests of all ages to swim and have fun, and a "Splash Zone" was created which incorporated 3 Theme Park quality water slides, a "Dumping Bucket", "Water Wars" water balloon game and a water play zone with equipment designed for toddlers. As part of the slide development a new set of Changing Facilities, Recreation Counter and "Cool Box" Ice Cream Bar were added.

Design Elements

2000 square metre swimming pool with tapered shoreline, infinity edge, Jacuzzi, waterfall and bridge
 3 water slides, Dumping bucket, Water Wars, Kids Pool
 Kids water play equipment, Changing Facilities
 Cool Box Ice Cream Bar & Recreation Counter.

Services Rendered

Master Planning, Theme and Motif Creation, Architectural Design, Interior Design, Landscaping, Integration.

Client: Shangri-La's Tanjung Aru Resort Sdn Bhd



TIM GLASS @ DESIGN BUBE



Sunset Bar at Shangri-La's Tanjung Aru Resort and Spa (US\$300k)
Kota Kinabalu, Malaysia
[\(www.shangri-la.com/kotakinabalu/tanjungaruresort/\)](http://www.shangri-la.com/kotakinabalu/tanjungaruresort/)

2010

The Brief

Situated on a point overlooking 5 of the most beautiful islands in the South China Sea, The Sunset Bar as its name suggests is ideally located to capture one of the most breath taking sunsets available. Replacing the original small and inappropriately placed bar, the new development has been enlarged and repositioned to allow more guests to experience the magnificent sunset with an uninterrupted view. Taking architectural cues from the local aesthetic and continuing the stylized development of the facilities within the resort, the Sunset Bar combines local ironwood shingles for the roof and hardwood timber for the columns, carvings and bar top with detailed stone work at the bar face and an under lit glass ice display as a central feature. Adding a strong sense of tradition and respect for the local culture, the use of a restored Sabahan ceremonial boat – Lepa Lepa, as a suspended feature compliments the other traditional elements.

Design Elements

Site Planning and Development.
 Architectural Design
 Interior Design

Services Rendered

Planning, Architectural Design, Interior Design, Integration.

Client: Shangri-La's Tanjung Aru Resort Sdn Bhd



Gym and Health Club at Shangri-La's Tanjung Aru Resort and Spa (US\$620k)
Kota Kinabalu, Malaysia
[\(www.shangri-la.com/kotakinabalu/tanjungaruresort/\)](http://www.shangri-la.com/kotakinabalu/tanjungaruresort/)

2010

The Brief

As part of the Hotels continued upgrading policy, Design Bube were requested to expand and redesign the existing Gym and facilities with the addition of an adjacent space to provide a state of the art facility for the resorts guests, and to establish a premier fitness facility for outside members. Utilizing space made available after the Hotel decided to change its use, a stand alone equipment gym was developed. Given the large volume available, and in conjunction with the hotels requested imagery and feel, the space was designed with a "New York" Loft aesthetic whereby the M&E services were exposed and the raw nature of the materials were expressed. In such an environment the new machines and equipment, as well as limited cabinetry were allowed to be the focus of the space. Removing the gym from the previous area allowed for this area to be redevelopment with highly aesthetic changing facilities and the integration of a mixed use Health Club area for Aerobics, Spin, Yoga and Pilates.

Workscope and Building Zones / Components to be Redesigned

Reception / Juice Bar

Office and Staff Facilities

Gym

Mixed Use Health Club

Male and female Changing Rooms

Dayroom (after hour's facilities)

Design Elements

Complete Planning of the Gym and Health Club

Architectural design of the redeveloped space

Complete Interior design of all zones

Services Rendered

Planning, Architectural Design, Interior Design, Integration.

Client: Shangri-La's Tanjung Aru Resort Sdn Bhd



Coco Joes Poolside Bar, Restaurant and Kitchen (US\$720k)
Shangri-La's Tanjung Aru Resort and Spa, Kota Kinabalu, Malaysia
[\(www.shangri-la.com/kotakinabalu/tanjungaruresort/\)](http://www.shangri-la.com/kotakinabalu/tanjungaruresort/)

2010 - 2011 Construction
2007 - 2008 Design

The Brief

After completing Chi, The Spa at Tanjung Aru Resort, Design Bube were approached to remove the “clutter” of the existing Coco Joes Poolside Bar, Restaurant and Kitchen which were located directly at the Spa entry. To ensure that the Spa experience was not adversely affected, and to enliven the adjacent poolside area, it was decided that a completely new set of facilities were necessary and they were to be relocated further from the Spa entrance. Given the location of the new facilities it was necessary that the architecture not be foreign to the location, but rather it should be influenced by it. As a result of this a modern twist was used in the interpretation of the timber siding and stone work of the Spa, with the new timber and stone walls being integrated with a distinctive horizontal emphasis.

Design Elements

Master Planning of poolside location
 Architecture and interior design for the Poolside Bar, Restaurant and Kitchen
 Hardscaping and design of new dining and relaxation zones

Services Rendered

Planning, Motif and Theme Creation, Architectural Design, Interior Design, Landscape Design, Integration.

Client: Shangri-La's Tanjung Aru Resort Sdn Bhd



TIM GLASS @ DESIGN BUBE



Golden Sands Resort by Shangri-La (US\$42m.)
Penang, Malaysia (www.shangri-la.com/penang/goldensandsresort/)

2007 - 2010

The Brief

The existing 4 star hotel operated by Shangri-La Hotels, adjacent to the Shangri-La Rasa Sayang Resort and Spa was to be given a long awaited renovation after many years of valuable service. The design brief was to establish a fresh new resort feel that was in keeping with the hotels directive of maintaining the existing clientele and the relaxed atmosphere of the current hotel.

Workscope and Building Zones / Components to be Redesigned

Entrance Experience
 Lobby and Reception
 “Cool Lounge” Relaxation / Information area
 Garden Café Restaurant
 “Sigis by the Sea” Restaurant
 Sea-facing Rooms and Hill-facing Rooms and Suites
 Family Rooms and Family Suites.



Design Elements

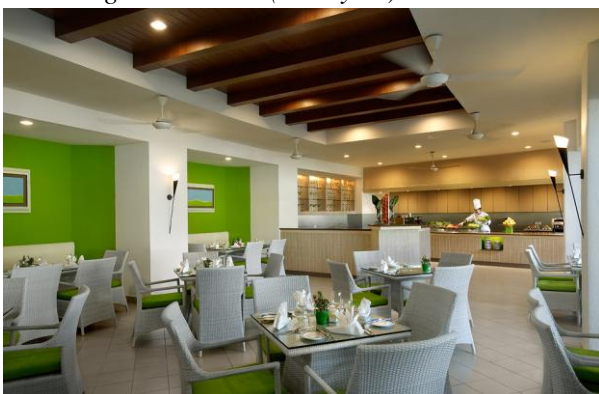
Complete interior and furniture design for existing room types
 Introduction of “Family Suites” through connecting rooms and “found” spaces
 Complete interior and furniture design for “Garden Café”
 Architecture, Interior and furniture design for “Sigis by the Sea” Restaurant
 Complete interior and furniture design for the Lobby, Reception and “Cool Lounge”



Services Rendered

Theme and Motif Design, Planning, Architectural Design, Interior Design, Graphic Design and Integration.

Client: Shangri-La Hotels (Malaysia) Berhad



TIM GLASS @ DESIGN BUBE





The Brief

Designed on 2 lots in the exclusive Holland Park neighbourhood, 17-18 Ewart Park was designed as a series of pavilions situated around a central open courtyard garden. The central extensively landscaped courtyard was used as an outdoor 'room' by the owners with its importance in allowing cross ventilation to all spaces being vital. Each room opens onto the courtyard and in conjunction with openings on the exterior of the building the ability to allow the breeze to flow through the rooms greatly decreases the need for artificial cooling. Incorporating wide roof eaves to shelter the windows allows the rooms to be naturally ventilated even in the heaviest of downpours.

The ground floor external walls were built in face brick imported from Australia providing a visually solid base, whilst the upper floor was finished in coloured cement render. Dark terra-cotta tiles were used for the roof, with roof vents and additional insulation incorporated in the roof structure to ensure the thermal comfort of the occupants.

Double glazed aluminium framed windows, steel framed insulated drywalls and cavity block walls are used to ensure the interior building environment is kept stable

Workscope

Theme and Motif Creation, Architectural Design, Interior Design, Documentation, Landscape concept, Integration, Site Supervision and Review for the entire development.

Design Elements

Complete Architectural and interior design for all of the development including Garaging for 3 cars, Family and Formal Living, Family and Formal Dining, Dry and Wet Kitchen, Study and Maids Quarters on the ground floor. Master Suite with extensive Walk-in Robe and Bathroom, Media Room and 4 additional Bedrooms with Ensuites at the 1st floor. Master Bedroom Retreat at Attic.

Services Rendered

Master Planning, Architectural Design, Interior Design, Furniture Design and Sourcing, Landscape Concept, Integration, Site Observation, Construction Review.

Client: Name Withheld for Privacy.



**Intercontinental Resort Presidential Villa
Bali, Indonesia (www.intercontinental.com/Bali)**

2007 - 2008

The Brief

As part of the systematic total upgrade of the existing Intercontinental Resort, Bali, the latest development in the project was to establish a Presidential Villa truly deserving of the title. Through the reuse and extension to the existing Villa, and the complete redesign of the interiors, not only furniture and fabric, but room layout and configuration, Design Bube has created an up to date, modern Villa fit for the President.

Design Elements

Architecture upgrading and addition.
Complete Interior Design
Redesign of Private Swimming pool
Landscape design including ponds planting and hardscape design.



Services Rendered

Planning, Architectural Design, Interior Design, Graphic Design and Integration.

Client: Intercontinental Resort Bali.





Intercontinental Resort Club Entry Experience & Club Rooms
Bali, Indonesia (www.intercontinental.com/Bali)

2007 - 2008

The Brief

Designed to give “Club Intercontinental” Guests a new arrival experience, one that is on par with the services provided by the Hotel, Design Bube were engaged to create a Master Plan for the relocation and redevelopment of the Club Wing. The new Club Entry experience was designed to allow ease of access for club guests through a designated drop-off, lift and check-in facility. Further to this the Club rooms were given a “facelift” with the introduction of new furniture, fabric and artworks.

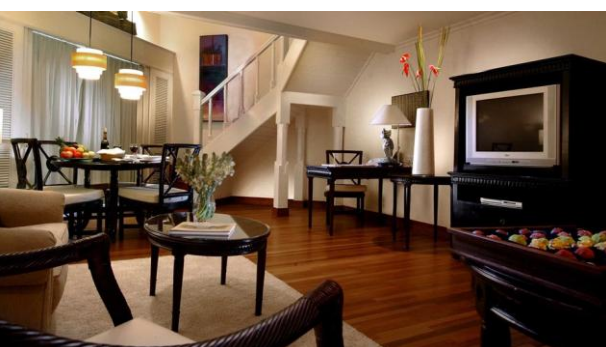
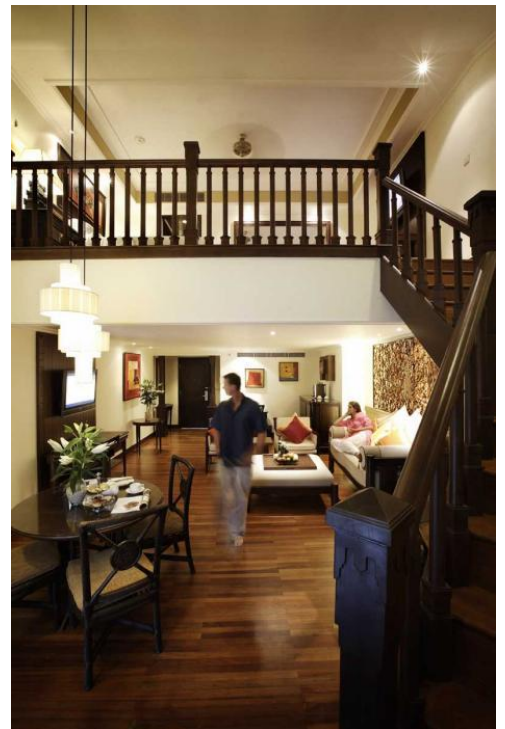
Design Elements

Master Planning of relocation and redevelopment
 Architecture upgrading and addition.
 Interior Design upgrade
 Landscape design including ponds planting and hardscape design
 104 Club Rooms and 16 Club Lofts

Services Rendered

Planning, Architectural Design, Interior Design, Graphic Design and Integration.

Client: Intercontinental Resort Bali.



TIM GLASS @ DESIGN BUBE



Chi, The Spa at EDSA Shangri-La Hotel

2006 - 2007

Manila, Philippines (www.shangri-la.com/manila/edsashangrila/health-leisure/chi-the-spa/)

The Brief

As part of the expanding group of Chi Spas, Shangri-La Hotels signature Spa, Edsa Hotel located in Metro Manila was designated as vital in the expansion of the brand. This was due not only as a result of its location in downtown Manila, but as a possible pre-destination to a longer stay at the larger Chi Spa at Shangri-La's Mactan Island Resort. With this in mind Design Bube continued the Resort Chi Spa theme of integrating elements from the Tibetan ancestry of Chi, with elements of the local culture of design and aesthetics. The use of timber trellis work and intricate carving for example which are strong elements in Tibetan architecture were combined with the use of local materials and craftsmanship to create an interplay of tradition and contemporary elements.

Workscope and Building Zones / Components to be Designed

Arrival and Drop-off, Outer Sanctum, Inner Sanctum, Male and Female Hand and Foot Spa, Yoga Zone, Library, 8 Single Treatment Rooms and 2 Couples Treatment Rooms

Design Elements

Complete Architecture and Interior Design of the Outer Sanctum

Aesthetic exterior detailing and design for existing elements integrated into Chi, The Spa

Complete interior and furniture design for Single Treatment Rooms

Complete interior and furniture design for Couples Treatment Rooms with outdoor Jacuzzi/ treatment area

Complete interior and furniture design for Inner Sanctum, Yoga Zone and Library

Complete interior and furniture design for both Male and Female Hand and Foot Spa's

Public area soft and hardscape design within the Chi boundary



Services Rendered

Theme/ Motif Creation, Planning, Architectural Design, Interior Design, Graphic Design and Integration

Client: Edsa Shangri-La, Manila



TIM GLASS @ DESIGN BUBE



***Chi Spa Suites, EDSA Shangri-La Hotel
Manila, Philippines***

2006 - 2007

The Brief

As an integral part of the development of Chi, The Spa at EDSA Shangri-La, Design Bube were requested to redesign 6 existing guest rooms to be rebranded as “Spa Suites” whereby guests could enjoy the benefits of added Spa design elements and amenities within their rooms. With hints of the spa carried into the room through the use of similar timber elements and craftsmanship, as well as stonework and fabrics, the new suites also incorporated new elements to the guest suites such as customized platform beds to allow additional rooms for in-room massages.

Workscope

Redesign existing rooms to function as new “Spa Suites”

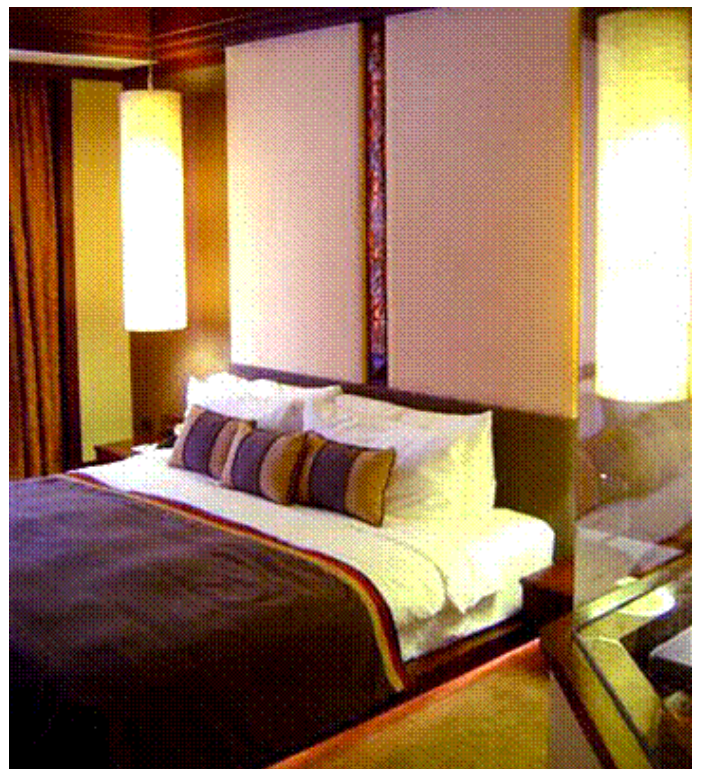
Design Elements

Complete interior and furniture design for “Spa Suites”

Services Rendered

Theme/ Motif Creation, Interior Design and Integration.

Client: Edsa Shangri-La, Manila





Chi, The Spa at Shangri-La's Tanjung Aru Resort
Kota Kinabalu, Malaysia (www.shangri-la.com/kotakinabalu/tanjungaruresort/chi-the-spa/)

2006 - 2007

The Brief

Situated on an island overlooking the South China Sea, Chi, The Spa at Shangri-La's Tanjung Aru Resort is a self contained Spa Village which appreciates the best of the spectacular location and the views it provides, and the necessity to be cocooned in an intimate environment. Designed to combine the essence and traditional elements of Tibetan culture with aspects of the local Sabahan vernacular, Chi the Spa at Tanjung Aru incorporates such richly detailed elements as window lattices and deep stone walls from Tibet, with intricate wood carvings and timber siding found within Sabahan Architecture. After crossing a land bridge and being engrossed in the ritual of the Sanctum, guests are escorted to their self contained Garden Suites or Deluxe Villas via a walkway on the periphery of the island, thus allowing the guest to feel the openness of the ocean prior to being held within the intimate environs of their Spa Suite. The Yoga Pavilion is set on the most westerly point of the island, cantilevered over the sea, thus giving the guests a most dramatic opportunity to enjoy the soothing benefits of Yoga whilst appreciating one of the most beautiful sunsets to be found.

Workscope and Building Zones / Components to be Designed

Arrival experience, Sanctum and Boutique, Yoga Pavilion, 3 Deluxe Villas, 5 Garden Suites, Hard and Soft Landscaping, Back-of-house and Management facilities and Chi, The Spa Reception at the Main Hotel Lobby

Design Elements

Planning for the entire Spa Village, including integration of arrival from the Main Hotel

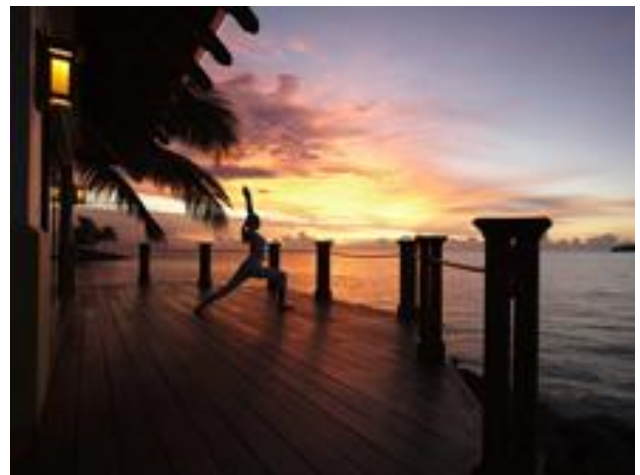
Complete Architecture and Interior Design for all buildings within the Spa

Public area soft and hardscape design within the Chi boundary and at the Chi arrival zones within the main hotel

Services Rendered

Theme/ Motif Creation, Planning, Architectural Design, Interior Design, Graphic Design and Integration

Client: Shangri-La's Tanjung Aru Hotel Sdn Bhd





**Chi, The Spa at Shangri-La Chiang Mai
Chiang Mai, Thailand**

2006 - 2007

[\(www.shangri-la.com/chiangmai/shangrila/health-leisure/chi-the-spa/\)](http://www.shangri-la.com/chiangmai/shangrila/health-leisure/chi-the-spa/)

The Brief

With the depth of Spa's available within Chiang Mai, a spa was a vital component of the development of the Shangri-La Hotel Chiang Mai; Chi however had to stand out from the competition. Further enhancing the blending of local elements with Tibetan architecture, the spa was designed on quite a small site to be closer to a local Thai village than those in Tibet. Age old materials such as wood and metal were used, with local craftsmanship taking a particularly strong place within the spa with delicately carved timber, painstakingly worked stone elements and intricately detailed stained glass and timber lights throughout.

Workscope and Building Zones / Components to be Designed

Arrival Experience, Sanctum and Boutique, Yoga Pavilion, Counseling Pavilion, 4 Deluxe Villas, 5 Garden Suites, Hard and Soft Landscaping, Back-of-house and Management facilities and Chi, The Spa Reception at the Main Hotel Lobby

Design Elements

Planning for the entire Spa Village, including integration of arrival from the Main Hotel

Complete Architecture for all buildings within the Spa

Complete Interior design for all buildings within the Spa

Public area soft and hardscape design within the Chi boundary and at the Chi arrival zones within the main hotel

Services Rendered

Theme/ Motif Creation, Planning, Architectural Design, Interior Design, Graphic Design and Integration

Client: Chiang Mai Shangri-La Hotel and Resort





Chi, The Spa at Boracay Shangri-La Hotel (US\$6m)
Boracay, Philippines (www.shangri-la.com/boracay/boracayresort/chi-the-spa/)

2005 - 2008

The Brief

As part of Shangri-La Hotel Groups development of a 5 star hotel complex on the Philippine island of Boracay, Design Bube were engaged to continue the development of Shangri-La's Resort Chi Spas. As with all resort Chi's, Boracay is designed in a classic yet contemporary style where Himalayan touches are combined with local cultural influences. The 1,350m2 Chi Spa Village features treatments based on Chinese and Himalayan healing concepts all set within a separate Spa Village complex designed as a sanctuary within the resort.

Workscope and Building Zones / Components to be Designed

Arrival Experience, Sanctum and Boutique, Yoga Pavilion, Grand Suite, 2 Deluxe Villas, 5 Garden Suites, Himalayan Pavilion, Male and Female Relaxation and Changing Suites, Consultation Pavilions, Swimming pool, Hard and Soft Landscaping, Back-of-house and Management facilities and Chi, The Spa Reception at the Main Hotel Lobby

Design Elements

Planning for the entire Spa Village, including integration of arrival from the main hotel

Complete Architecture for all buildings with in the Spa

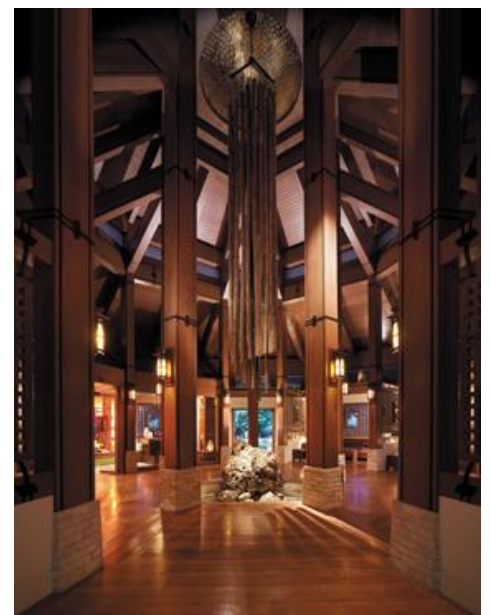
Complete Interior design for all buildings with in the Spa

Public area soft and hardscape design within the Chi boundary and at the Chi arrival zones within the main hotel

Services Rendered

Theme/ Motif Creation, Planning, Architectural Design, Interior Design, Landscape Design, Graphic Design and Integration

Client: Boracay Shangri-La Hotel & Resort



TIM GLASS @ DESIGN BUBE



**Chi, The Spa at Shangri-La's Rasa Sayang Resort & Spa
Penang, Malaysia (www.shangri-la.com/penang/rasasayangresort/chi-the-spa/)**

2005 - 2006

The Brief

Located within the beautifully mature landscaped grounds of Shangri-La's Rasa Sayang Resort, Chi, The Spa was designed as an integral part of the Multi-million dollar upgrade of the Hotel. Designed in Chi's distinctive style of Tibetan and Himalayan influences, Chi The Spa at Rasa Sayang incorporates indigenous Malay and Peranakan influences. Richly detailed elements such as window lattices and deep stone walls from Tibet are coupled with intricate wood carvings and timber work found within Peranakan Architecture. The Sanctum is reached via a gently rising timber walkway which first takes the guest through an arbor of bamboo and then over a pond teeming with life. Guests are escorted to their self contained Garden Suites or Deluxe Villas within the village via paths surrounded by native vegetation and the signature layered 'bamboo' which is an essential element to Chi landscaping. Yoga can be enjoyed within the specialized Yoga Pavilion, or outdoor on the lawn below soaring centuries old rain trees.

Workscope and Building Zones / Components to be Designed

Arrival experience, Sanctum and Boutique, Yoga Pavilion, 3 Deluxe Villas, 8 Garden Suites, Hard and Soft Landscaping, Back-of-house and Management facilities and Chi, The Spa Reception Pavilion adjacent to the Main Hotel Lobby

Design Elements

Planning for the entire Spa Village, including integration of arrival from the Main Hotel

Complete Architecture and Interior Design for all buildings within the Spa

Public area soft and hardscape design within the Chi boundary and at the Chi arrival zones within the main hotel

Services Rendered

Theme/ Motif Creation, Planning, Architectural Design, Interior Design, Graphic Design and Integration

Client: Shangri-La Hotels (Malaysia) Berhad



TIM GLASS @ DESIGN BUBE

**Health Club at Shangri-La's Rasa Sayang Resort & Spa
Penang, Malaysia**

2005 - 2006

[\(www.shangri-la.com/penang/rasasayangresort/sports-recreation/sports-facilities/\)](http://www.shangri-la.com/penang/rasasayangresort/sports-recreation/sports-facilities/)

The Brief

As part of the upgrade of the Hotel, Design Bube were asked to create a lively up to date Health Club that would be a pleasure to use. Situated on the second floor of the hotel, the Health Club was designed so that stationary bikes, rowing machines and treadmills all looked out over the lush mature grounds. Jacuzzis and Steam rooms were incorporated within both Male and Female Changing Rooms

Workscope and Building Zones / Components to be Designed

Reception

Gymnasium / Work-out zone

Aerobics Room

Male and Female Changing Rooms

Design Elements

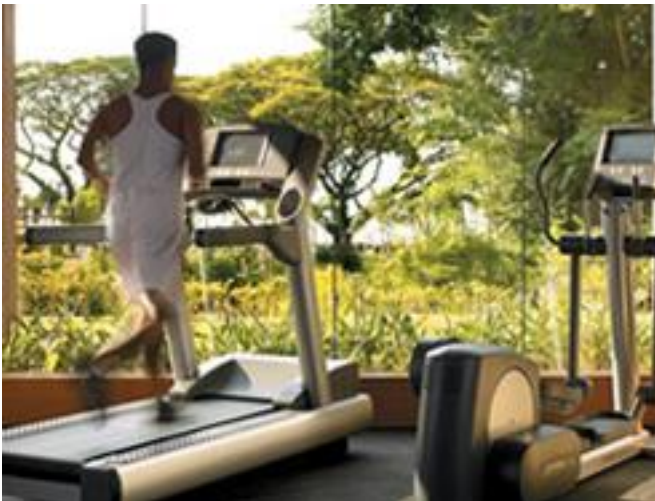
Planning for Health Club including the extension of the building to accommodate various elements of the Changing Rooms

Complete Interior Design

Services Rendered

Planning, Architectural Design, Interior Design and Integration

Client: Shangri-La Hotels (Malaysia) Berhad





***Chi, The Spa at Shangri-La's Villingilli Resort & Spa
Addu Atoll, Maldives***
[\(www.shangri-la.com/male/villingiliresort/chi-the-spa/\)](http://www.shangri-la.com/male/villingiliresort/chi-the-spa/)

2005 - 2009

The Brief

Situated on the North-East coast of Villingilli Island, Chi, The Spa at Shangri-La Maldives Resort and Spa experiences breath-taking ocean views. Designed to incorporate aspects of the local culture and architectural vernacular, the Spa is a rich blend of recreated coral stone walls and thatch roofs combined with the traditions and building forms of Tibet. Set within the locally sympathetic landscape, the buildings are dispersed to allow the guest to appreciate a sense of openness and serenity, with a feeling that they are alone within the Spa.

Workscope and Building Zones / Components to be Designed

Arrival experience, Sanctum and Boutique, Ahmchi Pavilion, Counseling Pavilions, Yoga Pavilion, 4 Deluxe Villas, 6 Garden Suites, Himalayan Treatment Pavilion, Windsong Pavilion, Hard and Soft Landscaping, Back-of-house and Management facilities and Chi, The Spa Reception at the Main Hotel Lobby

Design Elements

Planning for the entire Spa Village, including integration of arrival from the main hotel
 Complete Architecture for all buildings with in the Spa
 Complete Interior design for all buildings with in the Spa
 Public area soft and hardscape design within the Chi boundary and at the Chi arrival zones within the main hotel



Services Rendered

Theme/ Motif Creation, Planning, Architectural Design, Interior Design, Graphic Design and Integration

Client: Shangri-La International Hotel Management Ltd.



**Dr. Ali's Restaurant at Shangri-La's Villingilli Resort & Spa
Addu Atoll, Maldives**

2005 - 2009

[\(www.shangri-la.com/male/villingiliresort/dining/restaurants/dr-alis/\)](http://www.shangri-la.com/male/villingiliresort/dining/restaurants/dr-alis/)

The Brief

Situated on the East coast of the island, Dr. Ali's Restaurant offers a boutique dining experience with 3 architecturally different interior environments from which to choose. Offering food ranging from Arabic to Oriental, the resorts guests' dining experience is heightened by the interior architecture which has been developed with the particular food region in mind. Timber screens, carvings and intricate lanterns reflect ancient Arabic architecture in one of the pavilions, whilst rich silks and tapestries bring ties to the Oriental world alive in another. Tying the whole experience together is the central bar and herb garden where the spice trade routes which bring the Arabic and Oriental worlds together are displayed, and the story of the Maldivian Doctor, Dr. Ali who inspired the building with his love for both worlds is explained.

Design Elements

Design Bube were responsible for the Architectural and Interior design aesthetic of the entire restaurant including the following spaces:

Drop-off and Entry Experience with Herb Garden and Foyer

Restaurant Bar and wine cellar

Arabic and Oriental Dining Room Themes

Outdoor Dining Terraces and Private Dining Pergolas

Lighting design / aesthetic

Landscape Concept

Services Rendered

Theme/ Motif Creation, Planning, Architectural Design and Documentation, Interior Design and Documentation, Artwork, Landscape Design and Integration

Client: Shangri-La International Hotel Management Ltd





**Fashala Restaurant “The Edge” at Shangri-La’s Villingilli Resort & Spa
Addu Atoll, Maldives**
(www.shangri-la.com/male/villingiliresort/dining/restaurants/fashala/)

2005 - 2009

The Brief

As part of the exclusive Shangri-La Villingilli Resort and Spa, Fashala Restaurant situated on the North Coast of the island offers an intimate dining experience with the restaurant size limited to 54 guests. Taking advantage of the location, the restaurant situated on a promontory has spectacular 270 degree sea views taking in both the Sunrise and Sunset. Designed as an open restaurant, Fashala is cooled by the exotic sea breezes of the Indian Ocean which makes the use of air-conditioning unnecessary, thus further strengthening the Resorts environmentally sustainable credentials. The use of light ‘distressed’ white-washed timber and natural thatch roof covering establishes the architecture and interiors as “Beach chic” which allows the restaurant to sit very comfortably within the environment.



Design Elements

Design Bube were responsible for the Architectural and Interior design aesthetic of the entire restaurant including the following spaces:

- Drop-off and Entry Experience
- Restaurant Bar
- Restaurant Dining Pavilion and Deck
- Private Dining Terraces
- Lighting design / aesthetic

Services Rendered

Theme/ Motif Creation, Planning, Architectural Design and Documentation, Interior Design and Documentation, Artwork and Integration



Client: Shangri-La International Hotel Management Ltd.



Bella Singaraja Restaurant
Intercontinental Resort, Bali, Indonesia
www.intercontinental.com/Bali

2005

The Brief

Situated within the magnificent ground of the Intercontinental Resort, Bali, Bella Singaraja was designed to become a destination restaurant, not only for guests of the resort, but of the island itself. The complete refurbishment of the existing restaurant was designed to eliminate most of the previously styled colonial décor, with the exception of a few key pieces such as the magnificent chandelier and ceiling rose. Transformed into an opulent environment of warmth and ambience, the restaurant has been designed to aesthetically please the senses.

Bella Singaraja is swathed in rich hues of red and gold which is resplendent of an era that celebrated visits to the theatre, savvy sophistication and decadent living.

Design Elements

Design Bube were responsible for the aesthetic architectural and interior design of the Conservatory as well as the Interior design of the following spaces:

Entry Experience and Entry Parlor
 Wine Cellar and Tasting Table
 Chef's Table and Open Show Kitchen
 Main Dining Space
 Exterior Dining
 "Surya Dining Room" Conservatory

Services Rendered

Theme/ Motif Creation, Planning,
 Architectural Design,
 Interior Design, Graphic Design and
 Integration.

Client: Intercontinental Resort Bali.



**Rasa Spa and Health Club at Shangri-La's Rasa Sentosa Resort
Sentosa Island, Singapore**

2004

[\(www.shangri-la.com/singapore/rasasentosaresent/chi-the-spa/\)](http://www.shangri-la.com/singapore/rasasentosaresent/chi-the-spa/)

The Brief

Designed within the existing Shangri-La Sentosa resort, the Health Club & Spa was designed to offer guests an integrated fitness and spa experience. Dressed in light wood and rich burgundy accents, Rasa Spa houses three Deluxe Couples Suites (including one with a private whirlpool and steam facility), seven Single Treatment Rooms with attached showers and the Outdoor Thai Pavilion. The latter sits in a private, open air garden perched over a koi pond and waterfall. Guests can also sit back and enjoy the view of the lush greenery while getting a massage or pedicure at the Hand & Foot Massage Studio.

The health club is outfitted with the latest fitness equipment for an invigorating workout. Individual LCD screens allow guests to enjoy movies or televised programmes during a workout.

Workscope and Building Zones / Components to be Designed

Arrival experience, Reception, 3 Deluxe Suites, 7 Single Treatment Rooms, Outdoor Thai Pavilion, Hand and Foot Spa, Gym and Complete Male and Female Changing Rooms equipped with Jacuzzis

Design Elements

Complete Interior design for all elements within the Spa and Health Club

Public area soft and hardscape design within the Rasa Spa boundary

Services Rendered

Theme/ Motif Creation, Planning, Architectural Design, Interior Design, Graphic Design and Integration

Client: Shangri-La Sentosa Beach Resort





Chi, The Spa at Shangri-La's Mactan Island Resort
Cebu, Philippines (www.shangri-la.com/cebu/mactanresort/chi-the-spa/)

2003 to 2004

Chi is a Home of Health, Chi is a Place of Stimulations, Chi is a Getaway to Knowledge, Chi is a Well of Wonderment, Chi is a Gift to Share....

Basic Concept

Chi Spa Village is a self contained campus and magical garden extolling the virtues of the balanced lifestyle of these enlightened folks from the highlands of China. Just as the treatment philosophy of 'Chi' is to meld the traditions and vernacular wisdom of Tibetan culture, cutting edge health and science technologies, the building forms, the places and spaces of 'Chi' are a romantic interplay of traditional and contemporary elements.

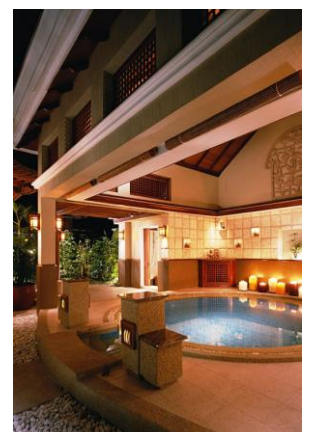
The 'Chi' Village is divided into several zones:

- A). Outer Entry Sequence
- B). Arrival, Welcome, Introduction, Sales
- C). Education and Inspiration
- D). Community Treatment
- E). Personal Treatment – Garden Treatments and Ocean View Villas
- F). Hidden Essential – Staff areas.

Services Rendered

Theme/ Motif Creation, Planning, Architectural Design, Interior Design, Graphic Design and Integration.

Client: Shangri-La Mactan Island Resort



Cowrie Cove Seafood Restaurant and Bar
Shangri-La's Mactan Island Resort, Cebu, Philippines
(www.shangri-la.com/cebu/mactanresort/dining/restaurants/cowrie-cove/)

2003 to 2004



Basic Concept

Perched overlooking the Ocean and sandy cove, the newly remodeled Cowrie Cove Restaurant and Bar combines the freshest seafood within a dramatic and stylish environment. The Cowrie Cove includes a wide variety of experiences and choices – meet friends for a sunset drink, or just indulge in Cebu's best made to order sushi and sashimi – select a live fish or crustacean and have it cooked to your request or to one of our many recipes – have our freshly grilled seafood or landlubber steaks, fresh salad, vegetables, compliments and accoutrements, all topped off with endless desserts – have a wine and a snack to the sound of the ocean or dine in air conditioned comfort, or eat on 'The Edge' in our open-air seats that hang over the ocean cliff – chill-out and dance the moon-lit night away in our cove 'interactive' bar.... And if that's not enough, every minute of your Cowrie Cove experience is served with Shangri-la style and care. Enjoy the choices, enjoy the setting, enjoy yourself – at Cowrie Cove Restaurant and Bar.

Services Rendered

Theme/ Motif Creation, Planning, Architectural Design, Interior Design, Graphic Design and Integration.



Client: Shangri-La Mactan Island Resort



TIM GLASS @ DESIGN BUBE

Gili-Gili Island Maldives

2001 to 2003

The Brief

The Maldivian Government Representatives approached Design Bube to join them as Concept Designers to create a new model for resort island development. This virgin island's future success is tied closely to the re-development of a domestic airport and the creation of a new golf course, all Master-planned by Design Bube.

The Island itself has unique/dramatic geological formations, requiring careful planning and design strategy which includes design and integration of:

1. Four separate hotel developments \pm 300 rooms
2. Destination spa
3. Eleven separate food and beverage outlets
4. Marine Biology Centre, Estuary Sanctuary Centre and Children's Discovery Centre
5. Retail Village with clinic, customs buildings, fitness campus
6. Public power generation, water desalinisation, sewage systems and too many operational service structures to mention

The Design

To help the Client distinguish Gili-Gili Island as a true 'must see' cultural and eco-green Maldivian resort, Design Bube helped conceive and develop the master plan concepts with logos and marketing plans for the Island and each of the hotels, along with complete design and construction drawings for all buildings, interiors, landscapes, signage's and service structures.

The four Hotels are each designed with completely unique themes, plans, imagery, colours, decors and target markets in mind. Each of the Hotel's terrain is different; the resultant experience for each is dramatically unique. Some units are elevated above ocean water, some above freshwater lakes and estuaries, some over rocky cliffs and beaches. Many units sit on a sandy bed with large palm trees rising through a living or bathroom. The only similarities in the Hotels are the care of their crafting to be energy efficient and culturally expressive.

Client: Villingili Investments Pte Ltd

Indra Maya – Sea Cliff (Ten Units and Custom Landscape) Bintan, Indonesia

2001 to 2003

The Brief

To help our Client add ten new units along a rugged stretch of beachfront utilizing 'pre-fab' or easy to construct units.

The Design

Design Bube incorporated an encounter with nature theme, which allows for **rustic** landscape and building designs (cost effective) to co-exist with the largely untouched natural terrain. The design builds on previous Indra Maya style, yet incorporates an abbreviated 'Zen' style to its simple detailing. The units are themed around governing elements – rock, sky, water, etc which reinforce the earthy primitive theme and takes full advantage of the indigenous handicraft industry.

Services Rendered

Theme/ Motif Creation, Planning, Architectural Design, Interior Design, Graphic Design and Integration.

Client: SemHotel Management Pte Ltd

Hudhufushi Island (Competition)
Maldives

2000

The Brief

To help the Client win the rights to develop a virgin island from a Government tender/design competition.

The Design

Design Bube recognised the natural landscape was teaming with animal life which could be lost due to over development. Our plan was to create three separate protected conservation zones with controlled walkways and observation posts. The Island was designed to cater to hotel/vacation guests by providing a central community/entertainment zone, but isolated housing units with maximum privacy. The plan was predicated on an 'in-house' land use plan which cleverly gave privacy and community areas for both tourists and native wildlife, allowing for controlled encounters, ensuring the continual presence of both.

Of the 22 proposals for tender, our design received the highest design score, but the Island was awarded to the highest bidder.

Client: Travel in Maldives Consortium

Coffee Society
Bangkok, THAILAND

1999

The Brief

The Client's objective is to set up ten coffee shop franchises within two years.

The Design

Design Bube developed a marketing/merchandising and corporate image programme for a Client who wished to start a coffee shop franchise. Realizing that branding and a need to distinguish itself from the myriad of coffee franchises saturating the market place, Design Bube utilized integration services to build a strong distinguished brand for COFFEE SOCIETY.

We took the fact that the Client is from Switzerland – "Land of Chocolate and Clocks" as a foundation and developed a concept of the Yin/Yang relationship of coffee to chocolate (the strength of coffee caffeinates are mellowed with the smooth, soft taste of chocolate, etc), branding it as Switzerland's leader in coffee/chocolate combination.

The interior design and décor also has a Yin/Yang concept, using rich wood and hand carved textures with contemporary colours, creating an ambience that is dynamic yet comfortable. The main focal point to the shop is an immense Swiss clock whose custom deconstructed look exposes the rotating cogs, gears and wheels. The clock's movement is also used to drive baskets filled with freshly baked desserts and food items to the second level coffee lounge.

In a world of a million different houses and franchises, the "**COFFEE SOCIETY**" experience is a truly unique and memorable one.

Services Rendered

Theme/Motif Creation, Interior/Graphic/Product Designs, Custom Furniture Design and Integration

Client: Andreas Kunzli



**Mayang Sari Hotel:
Bintan, INDONESIA**

1998 to 1999

(www.nirwanagardens.com/hotel/mayang-sari-beach-resort/)

The Brief

To revitalise and maintain a five year old resort (going on 20) while creating a clear and distinctive image which can cost effectively recapture a market of Singaporean, Western and Japanese visitors, looking for a quiet retreat.

The Design

Design Bube utilized the existing Central Theme to introduce the dramatically lit and elegantly displayed large clay pots with lotus and waterlilies to re-emphasize the name Mayang Sari “Fragrant Flower”. A large series of the pots and fragrant flowers create dramatic walkways, delineated public spaces and composed a dynamic entry fountain. Along with the fragrant flower theme, Design Bube developed 20 cottage motifs to give each chalet a unique feel and colour scheme. Wood carvings were sourced from Burma, pottery from Indonesia, custom tapestries handmade batik fabrics from Thailand and custom painted artwork from Singapore gave Mayang Sari a unique tropical feel.

Design Bube created a design and drawing revitalization package, including construction, supplying interior and exterior furnishings which extended and improved the quaint, rustic charm of Mayang Sari.

With great care and coordination, the Client’s slim budget of S\$130,000 was able to create an attractive memorable and unique holiday resort.

Services Rendered

Interior/Exterior Design and Supply

Client: P T Alam Indah Bintan



**Casa Del Pero:
Del Mar, California, USA**

1998 to 2000

The Brief

To help the Owners of a large (and aging) ranch home to make additions and modifications that allow for an artful and comfortable existence at a cost effective manner.

The Design

Design Bube devised a method of building large components in Thailand where labour costs are considerably lower than the US. These components were then shipped to the site for prefabricated installations. The Owners have an interest in utilising teakwood and Thai silks which are coordinated into the design of the home's custom additions and furnishings. Hand carved teak roof trusses, wall panels, door and window units, built-in furniture and cabinets, loose furnishings and hand carved wood art pieces are custom designed and fabricated by Design Bube. Art pieces from Asia were sourced, purchased and coordinated into the home's display. Local finished materials and stones are also composed into the design, making this a unique yet appropriate Californian home.

Services Rendered

Remodel and Interior Fit out

Client: Rick and Lorrin Boyer

**Three Island Resorts:
Maldives**

1997 to 1998

The Brief

To help secure for our client the development rights of three islands in the Maldives.

For the first time in many years the Maldivian Government made available by way of competition fourteen islands for development. Proposals were submitted by some of the largest and most prominent hoteliers and resort companies in the world. Development rights were awarded only to those proposals scoring the highest points in three categories:

1. Design quality and innovation.
2. Environmental preservation and demonstrated strategies for the protection of local ecosystems.
3. Planned integration and training of the Maldivian labour force.

The Design

To help the client distinguish their resorts and ensure their uniqueness Design Bube attributed to each island a clear and compelling theme with its own inspiration and dedication. These themes and motifs were developed around meaningful cultural, philosophical and ecological issues.

Designed to be environmentally sensitive and energy efficient, the villas convey an atmosphere of rustic simplicity. Guests can escape into a natural and truly Maldivian experience while enjoying all the modern conveniences of sophisticated accommodation.

Of the hundred and seventeen proposals submitted for the competition only nine were accepted.

Three of those nine proposals were made by Design Bube.

Services Rendered

Concept Design, Interior and Exterior Design

Client: Sunland Travel



The Brief

To help the client recover from poor sales by redesigning the image and feel of their show villa interiors. Design Bube was engaged to redesign, coordinate and source the necessary items for the interiors of a resort show villa.

The Design

Design Bube developed a clear and attractive interior ambience appropriate for the clients' target market. The desired ambience of “relaxed elegance” was achieved through the careful selection and handling of materials, by designing customized furniture and by the skillful use of colour and light.

Pleased with the results, our client requested that Design Bube redesign all the remaining villa interiors.

Client: Sembawang Leisure Pte Ltd





The Brief

Design the interiors for a Resort Spa with gift store, restaurant, treatment areas and service facilities on the island of Bintan in Indonesia.

The Design

Design Bube developed a concept that meaningfully organized the building elements and established a strong and clear thematic image for the building's interiors.

Symbolically, a spa represents renewal and rejuvenation; our desire to achieve wellbeing and regain balance. Our concept is expressed in a spiral path that winds its way to the top of the site. The path, and ones journey along it, is used as a metaphor to express the transcendent experience and feeling of wellbeing one hopes to reach after receiving the spa treatments.

Situated atop a small peninsula, the site has panoramic views of the ocean. The building elements are organized along the spiral path. Elements on the '*inside*' of the path (those close to the islands' centre) reflect the weight and solidity of the earth, while the elements on the '*outside*' of the path (those close to the ocean) reflect weightlessness, water and light.

The outside edge of the path represents the '*threshold*' across which one moves from the heaviness of earth to the lightness of sky and water. The last building along the spiral contains the treatment rooms, and culminating at the centre of the spiral, at the highest point is an observation platform that looks out over the expansive ocean and symbolizes the final achievement of transcendence.

Services Rendered

Interior Design, Image Creation

Client: Sembawang Leisure Pte Ltd

**WaveSong:
Singapore**

1997 - 1998

The Brief

Design Bube was engaged to work with the owner to create customized cost effective home furnishings for their three-bedroom condominium. We carefully combined hand crafted teak furniture from Thailand with locally made built-in furniture, utilizing out turn-key contracting / design services.

The design included furnishing the entire unit, including the garden patio area, the integration of a large series of Buddhist sacred art pieces and artifacts, lighting and soft furnishings for a cost of \$126,000.

Services Rendered

Theme/ Motif Creation, Interior Design, Furniture Design and Turn-Key Contracting.

Client: Mr. and Mrs. C T Song.

**Home on Ford Avenue:
Singapore**

1994 to 1998

The Brief

This very custom, very unique 15,000 sq ft home is conceived and designed around a family motif of a bamboo shoot. Every detail of this house, exterior and interior is carefully custom designed around the motif, including furniture, light fixtures, column capitals, bedposts, handrails, tile paving patterns landscape features, etc along with extensive interior water features and gardens. As the landscape concept was also undertaken by Design Bube, the house has a unique living room connected to the inside-outside swimming pool and an unforgettable family room.

Services Rendered

Theme/ Motif Creation, Planning, Architectural Design, Interior Design, Graphic Design and Integration.

Client: Confidential

**The Chancery
Newton, Singapore**
(Designed whilst at Liu & Wo Architects Pte. Ltd.)

2003

The Chancery Residences is a low density cluster townhouse project located at Chancery Lane, Singapore. The development comprises of 33 clustered terraces and 1 detached bungalow situated at a quiet and peaceful residential estate near Newton and Novena, not far from Singapore's Central Business District.

Designed to give individual townhouses a maximum of privacy within the tight site, each space looks out onto extensive landscaped gardens designed to screen views. With a heritage listed "Black & White House" located on the adjacent large open estate borrowed views to this property were developed.

Each townhouse is 3 storey's inclusive of basement car park/ utility area with a roof terrace. Natural ventilation was crucial to the development with the basement areas being naturally ventilated by lifting of the buildings 1m above natural grade. Internal courtyards similar to those developed in the Traditional Singapore Shop-Houses were included to allow more natural light to penetrate the residences.

The Chancery Residence has full condominium facilities such as,

- Swimming Pool
- Wading Pool
- Jacuzzi
- Fitness Area
- Playground
- 24 hours Security
- Car park

*Client: Warees Land
Pte. Ltd.*





8 Rochalie Drive Good Class Bungalow Development
Orchard Road District, Singapore (S\$1.8m).
(Designed whilst at Liu & Wo Architects Pte. Ltd.)

2000 - 2002

The Brief

Situated in a lush pocket of greenery, a stone's throw from the retail heart of Singapore, Orchard Road, the development of a Good Class Bungalow at 8 Rochalie Drive was undertaken by the client as an investment property, one to appeal to expatriates.

Taking advantage of the mature trees fronting the corner properties 2 road side boundaries, the residence was set back from the roads to allow the introduction of a swimming pool to be nestled between the residence and the landscaping.

Extensively used for entertaining, the ground floor rooms open up onto terraces overlooking the pool and landscaping, whilst the private bedrooms and office areas of the residence are located on the upper floors.

Featuring 4 main bedrooms and an entertainment room/ spare bedroom complete with bathroom, the development was designed to allow expatriate families plenty of space to receive overseas guests.

The residence plan was "opened-up" via the introduction of a courtyard separating rooms to allow natural cross ventilation to reduce the reliance on mechanical cooling. Large eaves and shading devices were incorporated to allow the building to function naturally, even during the heaviest of downpours.



Workscope

Architectural Design, Interior Design, Documentation, Landscape concept, Integration, Site Supervision and Review.

Design Elements

Complete Architectural and interior design for all of the development including Entry Hall, Family, Living, Dining, Entertainment, Dry and Wet Kitchen, Powder Room and Bathroom and Utility Room on the ground floor. Master Suite with extensive Walk-in Robe and Bathroom, Family/ Study, Gallery and 3 additional Bedrooms with Ensuities at the 1st floor. Swimming Pool and Landscaped grounds.

Services Rendered

Master Planning, Architectural Design, Interior Design, Furniture Design and Sourcing, Landscape Concept, Integration, Contract Documentation, Authority Submission, Tender and Review, Site Observation, Construction Review.



Client: Name Withheld for Privacy.

Sabang Citiwalk Mixed-use Development
Jakarta, Indonesia
(Produced whilst at CDG International Pte. Ltd.)

1997

The Brief

For one of the largest developers in the country, the mixed-use development was to take pride of place in the heart of the Central Business District, in downtown Jakarta, Indonesia. In liaison with the clients established marketing development consultants, Jones Lang Wootton a development strategy was established to ensure that the designed product was sure to hit the target market.

A 2 storey podium was designed to contain the “Market Street” where the ground level would serve as an attraction to the nearby office workers with an appropriate collection of shops to cater to this market. On the upper floor, the proposed “Eatery” was to incorporate a collection of fine international and local cuisine to cater to the lunch/dinner business crowd.

The 3rd level was to house a swimming pool and tennis court, with the incorporation of 2 towers above this, one containing offices, whilst the other was a combination of serviced apartments and condominium units.

Workscope

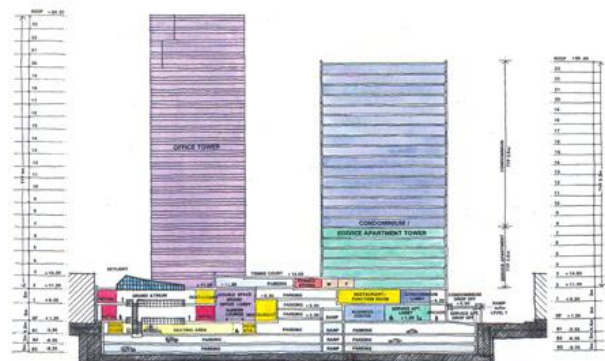
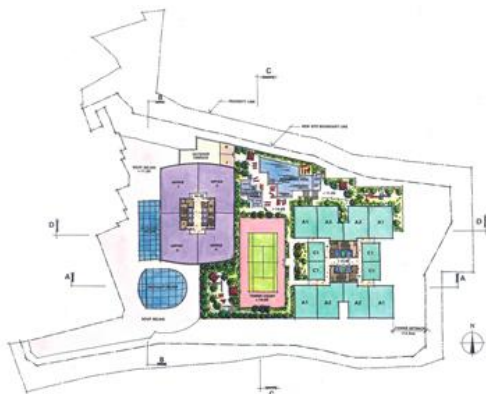
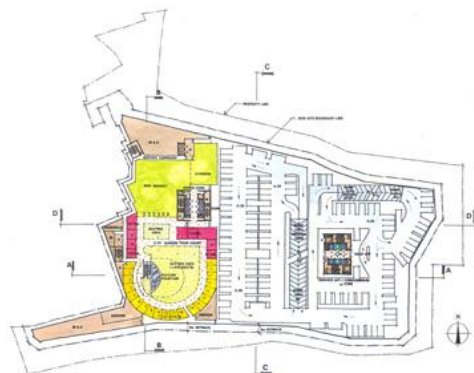
Architectural Design from Concept to Design Development and Site Review

Design Elements

Complete Architectural design for the entire development.



Client: Name Withheld for Privacy



TIM GLASS @ DESIGN BUBE



Amani Centre : Retail and Studio Serviced Apartments
Dubai UAE
(Produced whilst at CDG International Pte. Ltd.)

1997

The Brief

Located on Naif Road, in the heart of Old Dubai, this new mixed-use development comprising of retail, studio serviced apartments and roof top amenities was to be developed to bring life into the city heart.

The 4 floors of studio apartments sit around a courtyard and grand atrium, atop 2 floors of prime retail. The retail mix focuses on state-of-the-art electronics and gadgetry for the home, office and automobiles. The roof top houses a fitness centre/ gym and swimming pool as part of a dedicated club. Another component to the club is a dedicated restaurant overlooking the city.

The clean, sophisticated architecture of the building was developed towards attracting top-notch professionals and other up market tenants, besides creating a bold, international statement for the clients.

Workscope

Architectural Design from Concept to Design Development

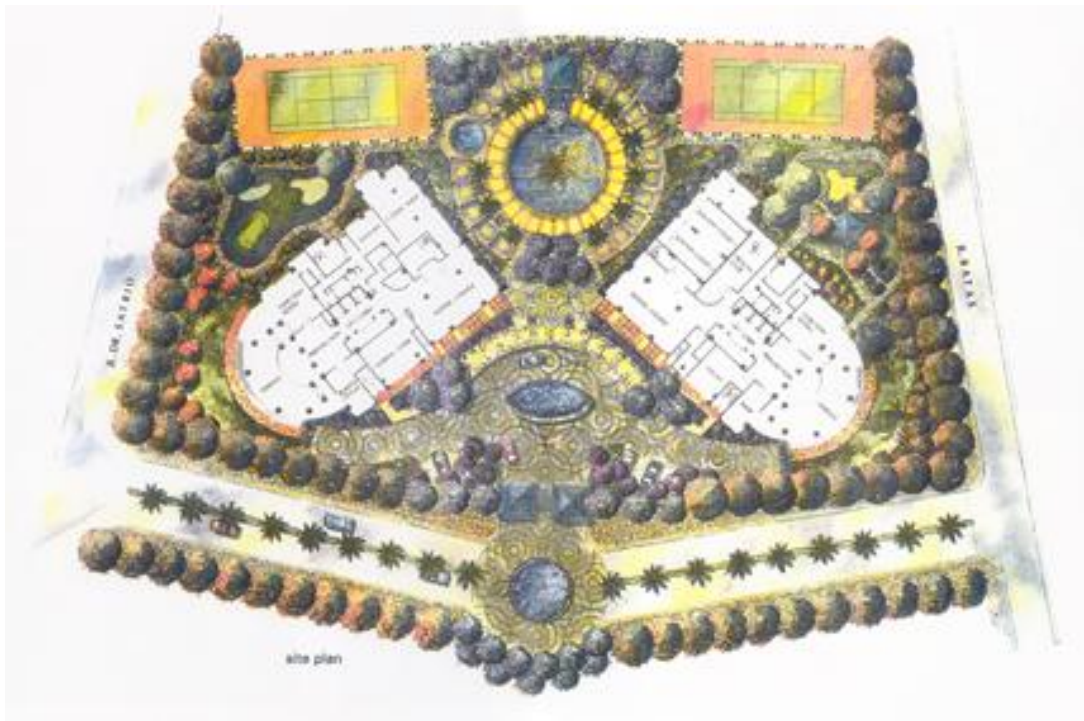
Design Elements

Complete Architectural design for the entire development.

Client: Al GhurairGroup



TIM GLASS @ DESIGN BUBE



Citraland Regency: Condominium & Serviced Apartments
Jakarta, Indonesia
(Produced whilst at CDG International Pte. Ltd.)

1994 - 1996

The Brief

Situated in one of Jakarta's premier locations, the Golden Triangle, Citraland Regency is a twin tower development of 300 five-star quality condominium and service apartment units. The addition of facilities such as two tennis courts, swimming pool and BBQ area make this a highly sought after address.

Developed as a joint venture between Singapore based developed Liang Court Holdings, and Indonesian counterpart PT. Ciputra Development, Citraland Regency was one of the first high profile developments to be completed within the area and is looked upon as a benchmark for further development.

The plan was conceived to respond positively to the site orientation giving particular attention to the clients strong Fengshui requirements. The two buildings sit on the site in a 'wingspread' formation, evoking an 'open arms welcome' to residents, whilst the landscape and hardscape concept was developed based upon the 'marriage of three circles'.

The round pool becomes the focal point of the three rings with the circular hardscape defining the frame around the pool. The tiered terrace with the trellis planters forms the outer frame to the pool as a final touch to enhance the privacy of the users.

The centre line of the symmetrical layout respected the central spine axis of the total 6.0 hectare master plan.

Workscope

Architectural Design from Concept to Design Development and Site Review

Design Elements

Complete Architectural design for the entire development.

Client: PT Ciputra Development





Bukit Golf Townhouses & Family Clubhouse
Surabaya, Indonesia
(Produced whilst at CDG International Pte. Ltd.)

1995 - 1997

The Brief

Located West of the city, about 20 minutes from downtown Surabaya, this vast development will occupy approx 2,000 hectares when completed. It will feature two 18-hole championship golf courses, housing, retail and commercial components. The Bukit Townhouses will sit on a 20.0 hectare site with 280 townhouses plus a full service family clubhouse.

Designed along the lines of Dutch Colonial architecture with a modern tilt, each Bukit Townhouse features 3 bedrooms, living, dining and study.

The townhouses are situated along an exclusive ring road, making this a quiet residential enclave. The use of open landscaping and a minimum of fencing allows the public and private outdoor space to blend together to produce an overall sense of living in a park.

The use of local materials and a high degree of attention to detail allows the townhouses to stand out as richly designed pavilions in the landscape.

Situated adjacent to the townhouses is the Bukit Family Clubhouse. Designed to take advantage of the contours, the clubhouse steps down the gently sloping site in an arc, thus creating a sheltered haven for the lagoon style recreation pool.

The many facilities included within the active recreation side of the clubhouse includes two tennis courts, squash courts, badminton courts, gym and aerobics area. A café, karaoke lounge and pub add to the after dark entertainment available at the clubhouse.

Additional activities for children include an indoor play area, amusement/ entertainment room and a library.

A café with seating areas situated on two levels of two different pavilions takes advantage of the views towards the lush tropical oasis that is the recreation pool, and the beautifully landscaped, manicured grounds of the golf course.

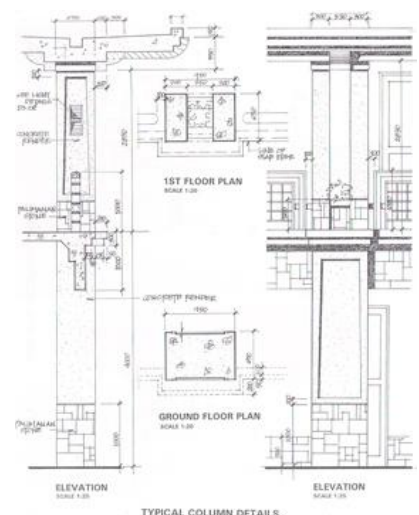
Workscope

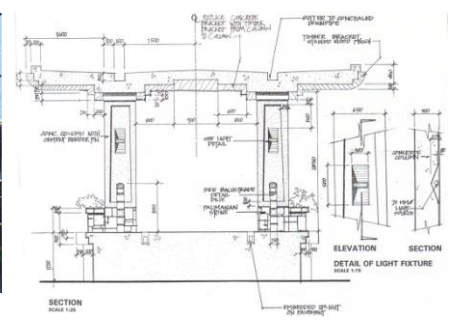
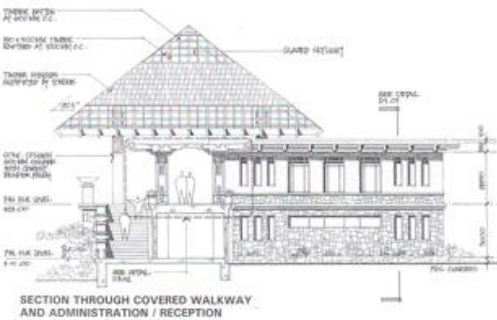
Architectural Design from Concept to Design Development and Site Review

Design Elements

Complete Architectural design for the entire development.

Client: PT Ciputra Development





TIM GLASS @ DESIGN BUBE